

PUSH Buffalo – Stormwater Management



PUSH Buffalo

- ▶ PUSH began in 2005 as a community-based organization dedicated to building a base of resident leaders capable of leading public campaigns to address the lack of jobs and rapidly declining neighborhood conditions, including widespread housing abandonment.
- ▶ All work starts with community organizing and leadership development
- ▶ PUSH pursues this work through a variety of program areas:
 - ▶ Green affordable housing development
 - ▶ Green infrastructure
 - ▶ Creation of pathways to green jobs and training
 - ▶ Assist families and businesses to access weatherization resources

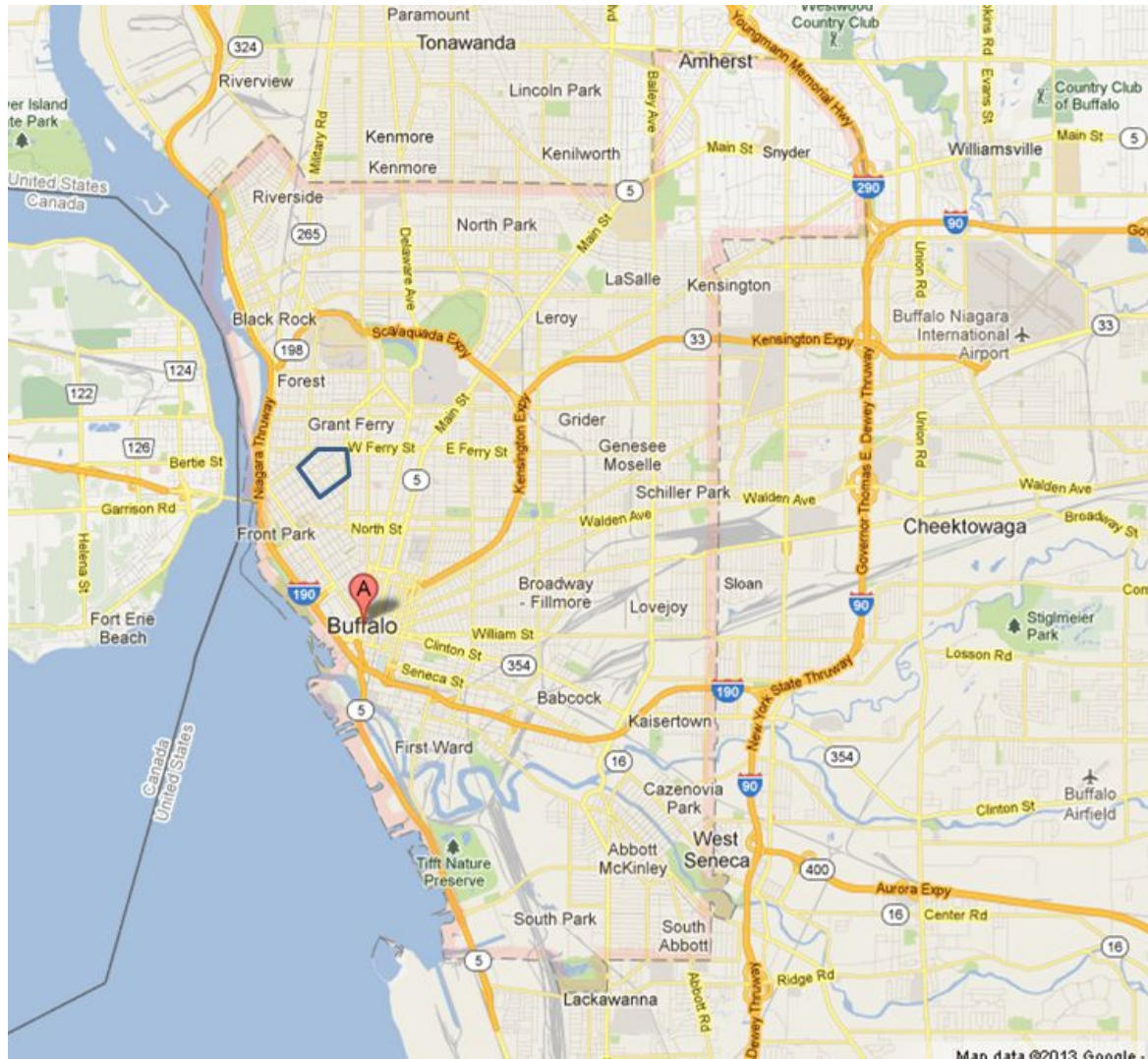


The Green Development Zone (GDZ)

- ▶ A place-based initiative anchored in a 25-block section of the city's West Side
- ▶ Combines green affordable housing construction, community-based renewable energy projects, housing weatherization, green jobs training and green infrastructure toward the goal of creating pathways to employment for neighborhood residents while improving housing conditions and reducing the neighborhood's carbon footprint.
- ▶ Leverages the power of community organizing to win commitments of public and private capital for needed improvements to the physical infrastructure of low-income neighborhoods.
- ▶ Create replicable models to use in communities across Buffalo and the Country

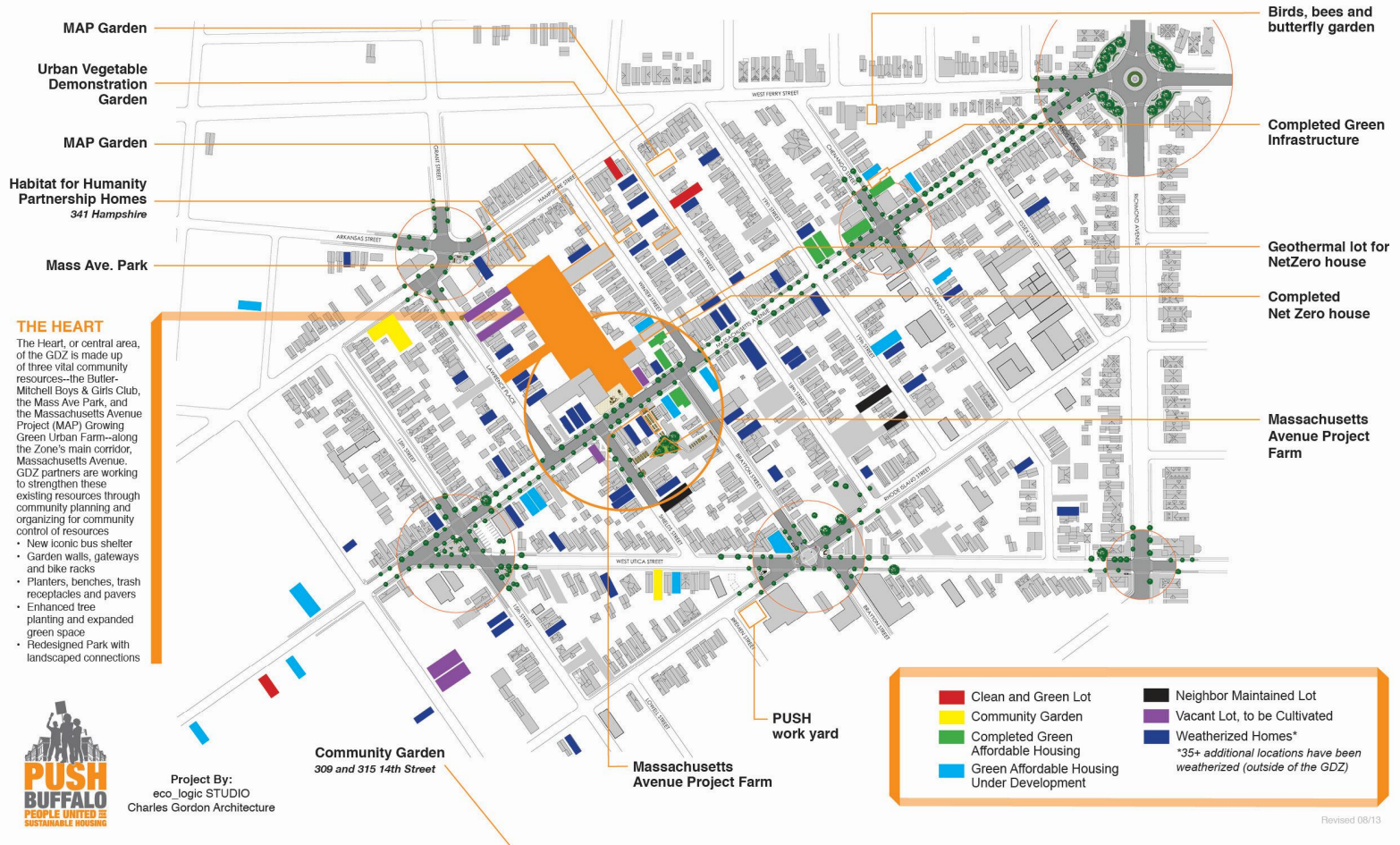


The Green Development Zone (GDZ)



The Green Development Zone (GDZ)

PUSH GREEN DEVELOPMENT ZONE



PUSH Blue

- ▶ Address Buffalo's Combined Sewer Overflow problem
- ▶ Add an environmental justice and community focused lens to the conversation about CSO's
- ▶ Create a social enterprise landscaping business to ensure that multiple benefits of this work are felt in impacted communities
- ▶ Leverage the job creating power of the local drivers of green infrastructure including:
 - ▶ The Buffalo Sewer Authority's commitment to green infrastructure and Long Term Control plan with the EPA
 - ▶ The changes to Buffalo's zoning code – the Green Code



The Impact of CSO's on the West Side



The Impact of CSO's on the West Side



The Impact of CSO's on the West Side



129-135 Chenango



Permeable Parking Pad



10 Winter and 456 Massachusetts



Hope Garden – Grant and Lafayette



PUSH Blue Successes

- ▶ Seventeen rain gardens.
- ▶ One large 20x30 permeable parking pad.
- ▶ A vegetable garden for a local charter school.
- ▶ Demolition of an impermeable parking lot and reuse of the concrete to build a garden wall.
- ▶ One living roof pilot project installed and another planned.
- ▶ Underground and above ground cisterns in urban farm sites.
- ▶ We have also made great progress to build relationships with the community and help them better understand the rain water problem.



PUSH Blue Green Jobs

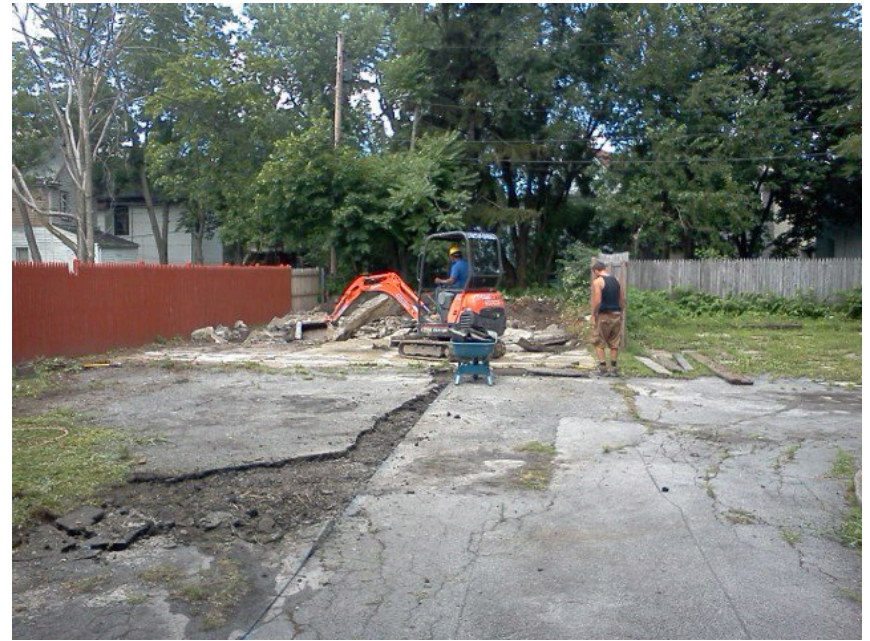
- ▶ In 2013 PUSH Blue hired four new employees to be part of a six person crew working on Storm water and Green infrastructure projects.
- ▶ Two full time and two part time.
- ▶ Our two full time employees have since gone on to assume more involved and challenging roles with PUSH.
- ▶ Moving forward our goal is to continue to hire and train three to five more members from the community.



The PUSH Blue Crew



Creating green jobs



Creating green jobs: Community recruitment



West Side

GREEN JOBS TRAINING AND EMPLOYMENT OPEN HOUSE

**Thursday, May 16, 2013
6:00pm
The Center, 271 Grant Street, Buffalo, NY 14213**



PUSH Buffalo is...

Hiring a landscaping crew for stormwater management projects on the West Side

Recruiting West Side residents for training in Green and Healthy Homes	Connecting West Side residents to job readiness and job placement resources offered by the Buffalo Employment and Training Center and the Department of Labor	Identifying a pool of job candidates for affordable housing rehab and construction projects on the West Side
	Referring West Side residents to jobs with local weatherization contractors	For more information: (716) 884-0356



Creating green jobs

- ▶ Identify, recruit and develop a pool of emerging workers
- ▶ Develop contractors to take on roles as high road employers.
- ▶ Continuously engage in market transformation activities and advocacy campaigns to create an environment that supports grassroots economic development in the clean energy, energy efficiency, and green infrastructure sectors.



PUSH Blue social enterprise landscaping business

- ▶ Leverage PUSH's sites and current grants to create a social enterprise landscaping business within the next two years
 - ▶ Hire and train local individuals for green infrastructure work as well as other positions within green jobs lattice
 - ▶ Develop market study and business plan to fully locate local green infrastructure markets such as the Buffalo Sewer Authority, contracts with Buffalo Niagara Riverkeeper, and private clients
 - ▶ Find sources for initial capitalization
-



14th Street Urban Farm



Building a Community Anchor Institution



www.pushbuffalo.org

www.greendevlopmentzone.org

Rahwa Ghirmatzion – rahwa@pushbuffalo.org

